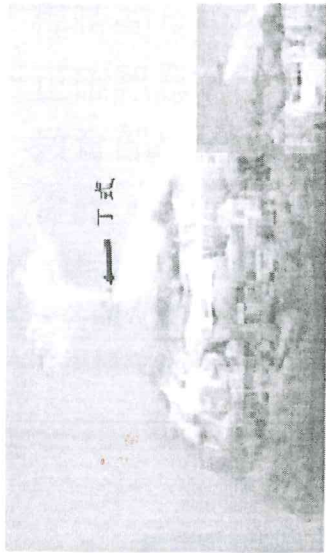
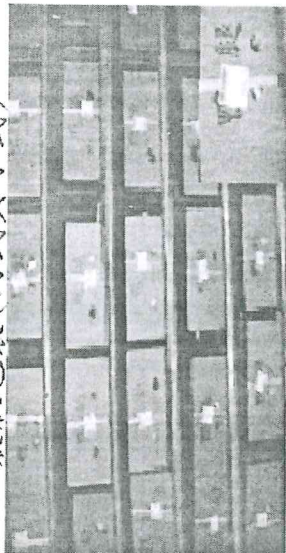


# 家禽「屠宰衛生檢查合格標誌」之標明方式

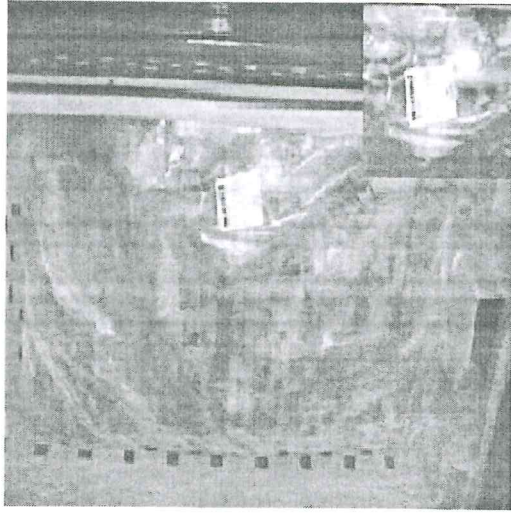
## 「家禽屠宰衛生檢查合格標誌之介紹」



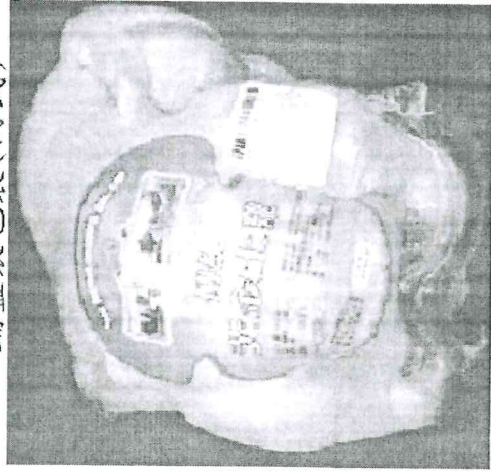
袋狀包裝(丙式與丁式)



紙箱包裝(丙式)

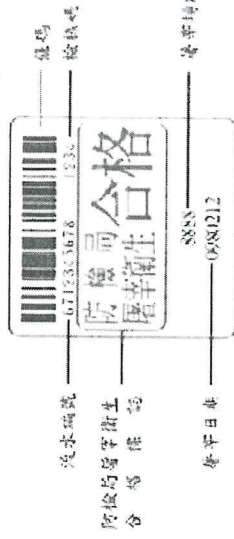


鋪籃袋包裝(丙式)



真空包裝(丙式)

### 丙式 (張貼於屠體包裝)



### 丁式 (用於禽肉包裝束口)



### 戊式 (用於環繞禽體頸、翅或腿部)

